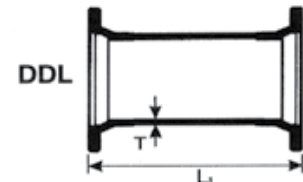
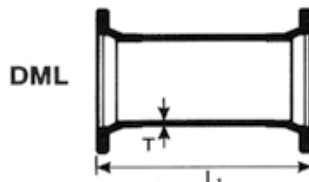
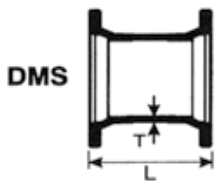
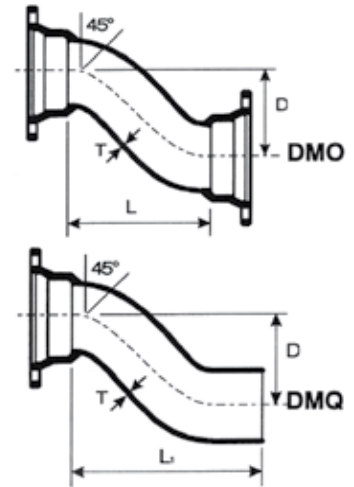


CONEXIONES COMPACTAS DE JUNTA MECANICA (MJ) HIERRO DUCTIL CLASE 350 DE ACUERDO A ANSI / AWWA C153 / A21.53

Desviaciones

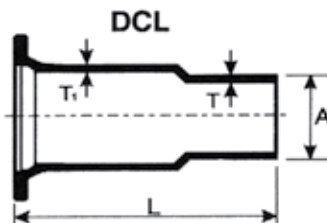
Diámetro	MJ X MJ		D	L	L1	T	MJ X PE	
	No. de Parte	Peso					No. de Parte	Peso
3 x 6	DMO36	30	6	9	14.5	0.34	DMQ36	29
3 x 12	DMO312	40	12	15	20.5	0.34	DMQ312	39
3 x 18	DMO318	49	18	21	26.5	0.34	DMQ318	48
3 x 24	DMO324	55	24	27	33.5	0.34	DMQ324	53
4 x 6	DMO46	45	6	10	15.5	0.35	DMQ46	44
4 x 12	DMO412	55	12	16	21.5	0.35	DMQ412	54
4 x 18	DMO418	65	18	22	27.5	0.35	DMQ418	63
4 x 24	DMO424	75	24	28	33.5	0.35	DMQ424	72
6 x 6	DMO66	41	6	12	17.5	0.37	DMQ66	54
6 x 12	DMO612	65	12	18	23.5	0.37	DMQ612	64
6 x 18	DMO618	75	18	24	29.5	0.37	DMQ618	72
6 x 24	DMO624	85	24	30	35.5	0.37	DMQ624	82
8 x 6	DMO86	84	6	13	18.5	0.39	DMQ86	78
8 x 12	DMO812	90	12	19	24.5	0.39	DMQ812	88
8 x 18	DMO818	100	18	25	30.5	0.39	DMQ818	96
10 x 6	DMO106	105	6	15	20.5	0.41	DMQ106	102
10 x 12	DMO1012	135	12	21	26.5	0.41	DMQ1012	132
10 x 18	DMO1018	165	18	27	32.5	0.41	DMQ1018	160
12 x 6	DMO126	124	6	17	22.5	0.43	DMQ126	112
12 x 12	DMO1212	153	12	23	28.5	0.43	DMQ1212	146
12 x 18	DMO1218	190	18	29	34.5	0.43	DMQ1218	184
12 x 24	DMO1224	202	24	35	40.5	0.43	DMQ1224	194
12 x 30	DMO1230	213	30	41	46.5	0.43	DMQ1230	205



Carretes

Diámetro	Carrete Corto		L	Carrete Largo		L1	T
	No. de Parte	Peso		No. de Parte	Peso		
3	DMS3	13	7.5	DML3	18	12	0.34
4	DMS4	18	7.5	DML4	20	12	0.35
6	DMS6	28	7.5	DML6	33	12	0.37
8	DMS8	38	7.5	DML8	46	12	0.39
10	DMS10	49	7.5	DML10	62	12	0.41
12	DMS12	56	7.5	DML12	76	12	0.43
14	DMS14	111	9.5	DML14	140	15	0.51
16	DMS16	123	9.5	DML16	170	15	0.52
18	DMS18	160	9.0	DML18	200	15	0.54
20	DMS20	195	9.0	DML20	255	15	0.57
24	DMS24	225	9.0	DML24	335	15	0.61
30				DML30	640	24	0.66
36				DML36	925	24	0.76
42				DML42	1390	24	0.82
48				DML48	1740	24	0.9

Carrete Doble Uso			
No. de Parte	Peso	L1	T
DDL4	23	12	0.34
DDL4	32	12	0.35
DDL6	50	12	0.37
DDL8	65	12	0.39
DDL10	89	12	0.41
DDL12	104	12	0.43



CARRETES DE MJ x ESPIGA

Diámetro	No. Parte	Peso	T	T1	A	S	L
3	DCL3	34	0.34	0.36	3.96	8	20
4	DCL4	50	0.35	0.37	4.8	8	20
6	DCL6	62	0.37	0.39	6.9	8	20
8	DCL8	90	0.39	0.41	9.05	8	20
10	DCL10	105	0.41	0.43	11.1	8	20
12	DCL12	128	0.43	0.45	13.2	8	20